



API'S PROFESSIONAL PROGRAMS

Programs for Power Sector Professionals

Professional Programs Purchase Order Form

Purchase Order Form	2
---------------------	---

Executive Insights Online Program

About the Program	4
Key Parts of the Program	5
Complimentary Alumni Tickets	6



Summer School+

How should attend	7
The Program	8
Executive Insights & Strategic Projects	9
Investment: Knowledge & Networks	10



POWERful Women Leadership Program - Professional

About the Program	11
What's Involved	12
Program Registration	13
2024 Program	14



Summer School Strategic Project Presentations webinar

About the Program	15
-------------------	----



How to register for a Professional Program

For all programs listed, you can fill out our Purchase Order PDF form and be invoiced. Use this for one or for multiple programs and for individuals or multiple participants. You can also order 'seats' in programs and provide us with details of individual participants later.

For some programs you can also purchase registrations directly through online ticketing. Discounts apply for staff employed by API member organisations for most programs.

To submit order forms and for more information, please contact:
Emily Marschke, Professional & Graduate Programs Manager,
emily.marschke@api.edu.au

DEVELOPING THE POWER SECTOR WORKFORCE FOR OUR FUTURE



Professional Development Programs Purchase Order

Date of order:	
Organisation	
Your name	
Your role	
Your email	
Your phone	
Do you need a quote from the API to generate a purchase order?	
Instructions for the API in issuing an invoice to you for this order:	

Need more information or submitting your purchase order:

Please contact Emily Marschke, Professional & Graduate Programs Manager, with any questions about the programs or ordering process, and to submit your order; emily.marschke@api.edu.au

How to specify your order for API programs:

Please write in the table below the number of registrations required for each program – the API will identify the appropriate pricing based on your membership level with the API and date of order. For the Powerful Women programs we encourage you to select eligible staff and ask them to apply directly for the PWLP scholarships (Professional and Graduate options). Please note in this order form the number of staff that you are nominating to apply for these scholarships.

What happens next: following your order, the API team will contact you regarding issuing an invoice and capturing the information we need about the individuals participating in the program(s).

API Program	Your Investment (inc GST)			Your order: # of tickets
<i>For experienced technically-oriented professionals (5+ years)</i>				
Summer School+ (includes Executive Insights online program)	<i>Member level</i>	<i>Early bird by 30 Sep (saving)</i>	<i>Regular (saving)</i>	
	Governor:	\$11220 (33%)	\$12550 (24%)	
	Principal:	\$11950 (28%)	\$12950 (21%)	
	Industry:	\$12850 (23%)	\$13590 (18%)	
	General:	\$14470 (13%)	\$16,490	
<i>Includes all accommodation and meals for the 2-week residential (you only pay for travel to Tasmania in February 2024)</i>				

Powerful Women Leadership Program Professionals Stream (includes Summer School+ and Exec Insights)	Pricing as per Summer School 11x scholarships up to \$8800 available. Employer organisations may be offered a scholarship to share between multiple applicants. Please note number of tickets for full registration AND/OR number of staff you have requested to apply for a part scholarship			
<i>For Early Career + Graduates + PhDs</i>				
Summer School Graduate Stream (includes Exec Insights online Early Career stream)	<i>API connection</i>	<i>Early bid by 30 Sep (saving)</i>	<i>Standard rego (saving)</i>	
	Member:	\$2270 (25%)	\$3140 (15%)	
	Non-member:	\$3140 (15%)	\$3690	
	PhD candid:	\$2210 (40%)	\$2590 (30%)	
	EA/API grad program	\$1990 (46%)	\$2210 (40%)	
<i>Includes all accommodation (twin share) and meals, single room and extra night surcharges.</i>				
Powerful Women Leadership Program - Graduates (includes Summer School Graduate Stream + Exec Insights Early Career)	<i>API connection</i>	<i>With \$1500 scholarship</i>	<i>Standard rego (saving)</i>	
	Member:	\$1230	\$2730 (15%)	
	Non-member:	\$1700	\$3200	
	PhD candidate:	\$750	\$2250 (30%)	
<i>Includes all accommodation (twin share) and meals, single room and extra night surcharges.</i>				
Graduate Learning Program: Power & Renewable Energy by Engineers Australia and API	\$6600 for 18 month program, with 3 modules delivered by Engineers Australia and access to the API's Executive Insights online program and AEMO NEM Basics modules.			
<i>For all staff in your organisation</i>				
Executive Insights online program + Early Career stream	\$0 / complimentary tickets for Summer School and Powerful Women program alumni			
	\$0 / complimentary tickets for API member orgs (10x Governor, 5x Principal, 2x Industry members); API will provide a discount code to each member organisation's key contact so you can issue tickets directly to your staff OR you can provide contact details for API to issue to staff			
	General registrations: <ul style="list-style-type: none"> • \$990 API members • \$1650 general • \$100 PhD candidates 			
NEM Basics online course by AEMO + API	\$40 ea, 12 months access Contact details or register directly online:			
Summer School Strategic Project presentations webinar on 29 Feb 2024	Free; live webinar of Summer School project teams responding to the challenge questions shared by Executive Insights speakers			



Online + Early Career Stream

Online-only modules with optional extra support for early career professionals to embed the insights from our executives and emerging leaders into their own career and learning & development plans

What are the key challenges facing the power sector and how do you approach these issues as a leader? ... from the perspective of the leaders of the sector's leading organisations

What insights can 40+ current and emerging mid-career leaders in the power sector share **on actions we can all take to address the challenges and seize the opportunities?**

What connections are there in the issues and actions **to strategic workforce planning?**

What **skills and knowledge** should **early career professionals** be developing?

Online access to our Exec Insights program plus extra resources for early career professionals.

Join live sessions in Zoom or watch recorded sessions in our online learning platform API Academy.

Complimentary registrations* for API member organisations & Summer School Alumni + discounts for PhD candidates**

ABOUT THE PROGRAM

The API's Executive Insights online program is a unique opportunity to explore these topics, joining the community of 100+ other participants in the Exec Insights program including those from the API Summer School and Powerful Women Leadership Program.

All participants gain from the high-level insights and exploring the challenges and opportunities facing the sector and the methods and mindsets to use when developing solutions (and lessons from their own experiences).

10x 30 min fireside chats with power sector executives + insights from 40+ emerging leaders on solutions and developing the future workforce.

After hearing from the 10x Execs, additional analysis of the issues raised is completed by 40+ mid-career power sector leaders who attend the API's Summer School 2-week residential in February 2024.

Executive Insights Online + Early Career participants are able to watch the presentations, access the written reports, and have an exclusive follow-up Q&A with the Summer School participants about their reports and recommendations.

Executive Insights Online

KEY PARTS OF THE EXECUTIVE INSIGHTS PROGRAM

- Participate in **ten 30 minute online sessions with industry executives** on strategic challenges and opportunities in the power sector, with Q&A.
- Watch the **live (online) presentations by mid career future leaders (Summer School Participants)** in response to the Executive's key challenges.
- **10 written Board Reports** from mid career emerging leaders on recommended actions, skills needed to address the strategic challenges, and how the next generation can develop themselves to best contribute
- **Q&A session** with the mid career teams on their recommendations and broader careers and insights.
- Access to an **exclusive community of 100+ others** all focused on the 2023 Exec Insights.
- Support to self-assess skills linked to the Briefs and to create a **Personal Career Development Plan**.



API **EXECUTIVE INSIGHTS**

2023 SERIES
Challenge
Question #1



BRETT REDMAN
CEO, Transgrid



Energy transition will need a large skilled workforce.

What do we need to do or solve to build the workforce?

API

EXECUTIVE INSIGHTS

2023 SERIES
Challenge
Question #4



RENEE ANDERSON
Executive - People
TasNetworks



The energy transition is going to require significant new investment and infrastructure, in both generation and transmission. The energy 'Trilemma' points to the balance between security, affordability and environmental sustainability. In some instances, the new infrastructure may need to be built in high-value environmental areas, and across private land to be the most reliable and affordable for customers.

How do we approach this challenge of balancing the 'trilemma' – what trade-offs might need to be made between the three arms of the trilemma?

Executive speakers: 2024 speakers will be announced in October 2023.

Past speakers include **Peter Price, Energy Queensland**, Executive General Manager – Engineering | **Violette Mouchaileh, Australian Energy Market Operator (AEMO)**, Chief Markets Officer | **Bess Clark, Marinus Link**, Chief Executive Officer | **Paul Simshauser, Powerlink**, Chief Executive Officer | **Stephanie Unwin, Horizon Power**, Chief Executive Officer | **Gair Landsborough, Western Power**, Executive Manager Asset Management | **Doug Schmidt, SA Power Networks**, General Manager Regulation | **Scott Ryan, Endeavour Energy**, Chief Asset and Operating Officer | **Jennifer Hughes, Transgrid**, Head of Network Operations, | **Fiona Orton, Transgrid**, Head Of Innovation and Energy Transition | **Kelly Wood, Ausgrid**, Executive General Manager, Network Delivery & Services | **Renee Anderson, TasNetworks**, Executive - People | **Dr Bill Lilley, RACE for 2030 CRC** Chief Research Officer | **Margaret Pynchla, Western Power**, a/Exec Manager Energy Transition and Sustainability | **Stewart Bell, Powerlink Queensland**, Executive General Manager Network and Business Development | **Heidi Sick, Aurecon**, Industry Director, Energy - Australia & NZ | **Merryn York, AEMO**, Executive General Manager System Design.

Executive Insights Online

Dates	Main Activities	Hrs
WED, 20 SEP 2023	Launch: Zoom events details and online learning platform access links sent to all registered participants.	
WED, 4 OCT 2023	Executive Insights 1+2 online live sessions	1.5
WED, 18 OCT 2023	Executive Insights 3+4 online live sessions	1.5
WED, 1 NOV 2023	Executive Insights 5+6 online live sessions	1.5
WED, 22 NOV 2023	Executive Insights 7+8 online live sessions	1.5
WED, 6 DEC 2023	Executive Insights 9+10 online live sessions	1.5
THURS, 29 FEB 2024	Presentations and Q&A of 10x live presentations of the Strategic Project presentations from the Summer School.	5
WED, 6 MAR 2024	Public release of the ~10 written Board Reports from the Summer School participants.	3-10
WED, 13 MAR 2024	Q&A on Executive Insights Briefs (and recorded presentations) with the Summer School project teams.	1.5

Registration costs:

- \$1650 per participant
- \$990 (or \$0*) for staff at API member orgs
- \$0/complimentary for Summer School & Powerful Women Alumni*
- \$100 for PhD students (20x \$1550 scholarships available)



Option 1: Register directly online

Option 2: Purchase Order Form by email

Submit the Purchase Order Form to Emily Marschke: Emily.Marschke@api.edu.au

Complimentary tickets

Summer School + Powerful Women Alumni: we will send complimentary ticket offers directly to individuals for programs from 2020 onwards. Please contact Emily otherwise.

API member orgs can distribute complimentary (\$0) tickets to their staff, The API offers 10x tickets for Governor level members (6x for Principal, 2x for Industry). Details will be sent to API key member contacts to distribute internally.

Contact Emily Marchke for further details: Emily.Marschke@api.edu.au



SUMMER SCHOOL+

**Strategic technical capability development for
the future leaders of the power sector**

The Australian power sector's premier professional development program for emerging technical leaders, delivered for industry by industry, for 15+ years. Our 2024 program includes online sessions with 10+ executives PLUS our 12 day residential program with 60+ experts. Learn and connect through workshops, panels, speakers, group projects, site tours + social activities.

Summer School+ is a technical leadership program that builds the strategic, technical and leadership skills and insights that you will need to be a leader in the technically-oriented organisations in the Australian power sector.

Join us in 2024 to experience our enhanced program featuring online senior executives sessions (starting October 2023) and the highly regarded 2-week residential School in **Lutrawita / Tasmania in February 2024.**

Build your knowledge and connect with experts, executives and other emerging leaders in the power sector and strengthen your ability to make significant contributions to our sector and your organisation's future.

WHO SHOULD PARTICIPATE?

Summer School+ is for experienced professionals in engineering and other technically oriented roles in the power sector, with 5+ years experience, who want to strengthen their ability to make significant contributions to our sector and to their organisation's future. Women can also automatically join the Powerful Women Leadership Program, which includes the School and extra activities.

There is great value in senior staff attending - a chance to step out of the turbulence of day to day to look at the bigger picture for the sector and connect deeply with others.



THE SUMMER SCHOOL+ PROGRAM

Full Program includes online sessions pre + post the live Summer School

Dates	Main Activities	Hrs
WED, 20 SEP 2023	Launch: Zoom events details and online learning platform access links sent to all registered participants.	
WED, 4 OCT 2023	Executive Insights 1+2 online live sessions	1.5
WED, 18 OCT 2023	Executive Insights 3+4 online live sessions	1.5
WED, 1 NOV 2023	Executive Insights 5+6 online live sessions	1.5
WED, 22 NOV 2023	Executive Insights 7+8 online live sessions	1.5
WED, 6 DEC 2023	Executive Insights 9+10 online live sessions	1.5
MON, 11 DEC 2023	Submission by Summer School participants of preferences for Syndicate Project topics.	
WED, 20 DEC 2023	Allocations to syndicate project groups	
12 - 16 FEB 2024	Syndicate project group introduction sessions and 30 mins session with the Executive speaker for your project (or nominated representative)	1.0
19 FEB - 1 MAR 2024	Summer School 2024 live sessions in Lutrawita/Tasmania	100
THURS, 29 FEB 2024	Presentations and Q&A of 10x live presentations of the Strategic Project presentations.	5
WED, 6 MAR 2024	Public release of the ~10 written Board Reports from the Summer School participants.	3-10
WED, 13 MAR 2024	Q&A on Executive Insights Briefs (and recorded presentations) with the Summer School project teams.	1.5

Summer School+ ... a chance to step out of the turbulence of the day to day to look at the bigger picture for the sector, and connect deeply with others in similar situations.



EXECUTIVE INSIGHTS & SUMMER SCHOOL STRATEGIC PROJECTS

As a Summer School participant you are deeply involved in our Executive Insights program - you'll join our 10x execs online as they share their insights in 30 minute 'fireside chat' style sessions including the chance to put questions directly to the Execs in the online Q&A.

These sessions provide invaluable strategic context for the comprehensive content from industry experts that you will further explore during the 2-week residential Summer School.

Work on a challenge defined by a power sector leader, that has true strategic relevance for the sector.

Work in a team over 2 weeks to develop recommendations for action and workforce development.

Share your insights with the Australian power sector through a live webinar and written report.



Our Executives also provide a **Challenge Question** as a focus for team collaboration activities during the School (the famous Syndicate Projects); Summer School participants will **work in groups of 5 to develop a response to an Executive's Challenge Question**, including an exclusive small-group session with the Executive to further explore the strategic issues identified by the Executive.

Groups will **collaborate during the School** to identify recommended actions in response to the Executives challenges, including how early career professionals can develop so they can contribute to the issues in the future.



In addition to the knowledge gained through these projects, you'll develop skills to help you lead discussions between three generations of leaders for the power sector, including the Executives, Summer School participants, and undergraduates and graduates (attending online, and future female leaders attending in person via the POWERful Women Leadership Program).



Groups will deliver a **20 minute presentation at the end of the School** to a live and online audience of 100+ people, and will **write a report for their nominated Executive** that is also shared with the broader API community.

Developing effective communication abilities is a strong theme during the School, and **Communication Skills Prizes** for best group and individual presentations (male and female) are awarded at the School's Gala Dinner. 10

INVESTMENT: KNOWLEDGE & NETWORKS

Past participants in the School (and their managers) consistently share that **the value of the School is the knowledge and the deeply developed professional networks created** through the unique residential program - no other program can match the opportunity to build such deep and career-spanning relationships with peers from across the sector and the country and at such an important stage in your career.



The School includes comprehensive discussions with 60+ expert speakers, group projects (Syndicate Projects) linked to our Executive Insights speakers, site tours, and extensive networking and social activities to deepen your connections with peers across the national API community. You'll also connect with the 75+ current and future female leaders in the API's new Powerful Women Leadership Program - a very unique experience!



Your investment in the Summer School+ includes the renowned 2-week residential program, online Executive Insights modules and optional online training. You can also access all the recorded executive sessions from the 2024 program and slide decks from presenters at the School (when provided).



With industry conferences now costing \$1000+ per day plus hotels and meals as extra costs, we are proud to offer the Summer School to our member organisations and others for the following prices (your only extra cost is your travel!).

Registration includes all accommodation and meals at the live School (including all group dinners and functions).



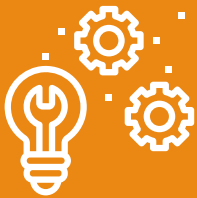
Submit the PDF Order Form by email to Emily Marschke to secure your seat & pay by invoice: Emily.Marschke@api.edu.au
 * You can register your order without the names of participants to secure the Early Bird rate

	Early Bird (closing 30 September)*	Until 30 January 2024
Governor	\$11,220 (save 33%)	\$12,550 (save 24%)
Principal	\$11,950 (save 28%)	\$12,950 (save 21%)
Industry	\$12,850 (save 23%)	\$13,590 (save 18%)
Non-member	\$14,470 (save 13%)	\$16,490

POWERFUL WOMEN LEADERSHIP PROGRAM 2024



ABOUT THE PROGRAM



Stronger understanding of strategic technical challenges and opportunities in the power sector



Career pathways and personal and leadership development plans



Supportive personal and professional connections

The API's **POWERful Women** Leadership program is a technical leadership program designed to develop the leadership capabilities and skills of 80+ women per year in the power sector.

The program will strengthen your capability to make impactful contributions in leading our sector and provide invaluable connections, information and inspiration to guide your career progression. This program includes all the activities in the highly regarded 'API Summer School+' residential technical leadership development program and the linked Executive Insights series, plus extra activities over a full 12 months focused on the interests of current and future women leaders.

How to participate:

- You/your organisation can **purchase direct registrations** for the PWLP program using the API Order Form (as is done for registrations for the normal API Summer School).
- You can also apply for **part or full scholarships to contribute to costs** (see details over); 15+ part and full scholarships are available thanks to support from the Australian Government's Department of Prime Minister and Cabinet.
- **Staff at API member organisations must be nominated by their employer** to apply for a scholarship and the POWERful women program.

WHAT'S INVOLVED



12 months of activities with 70+ other technical women in power, all focused on developing your strategic technical leadership capabilities and your career pathway

- Attend the **API Summer School in Tasmania in February 2024** + the online Executive Insights sessions to boost your knowledge of the strategic technical and market challenges and opportunities involved in transforming Australia's power sector.
- **Build connections** with the other 50+ emerging leaders attending the Summer School and the 60+ speakers (industry experts and leaders).
- **Take a leadership role in the 'Future of the Workforce forum'** at the API Summer School 2024; 100+ participants will explore the key issues that will shape the development of the power sector workforce and the transformation of Australia's energy systems.
- Participate in exclusive **online workshops and mentoring** that focus on the unique career and leadership pathways in the power sector to inspire your own journey and build your understanding and skills.
- You'll be supported to **create a personal career development plan** to sustain your journey to leadership roles in the power sector.
- **Connect with the 50 undergraduate and graduate women** also in the program in 2024, and an opportunity to be part of the **POWERful WOMEN's 3-day Early Career residential leadership retreat**.
- Opportunity to **shape and feature in the API's activities to engage and inspire female high school students** about careers in the power sector.
- Contribute to the API's **national forum on Women in Power engineering** for International Women in Engineering Day in June 2024.



PWLP PROFESSIONAL PROGRAM REGISTRATION

REGISTER NOW



Select 1 of the 2 options below but you **MUST** coordinate with your employer about the internal process for selecting people to attend the Powerful Women and Summer School programs in 2024

Option 1: Apply for a part or full PWLP scholarship, and indicate if you will continue your registration if you are not successful with your application.

11 scholarships (up to \$8,800 inc GST) are available for women who have support from employers. 4 full scholarships (worth \$16,640, including some travel costs) are available for women who cannot access support from their employer (ie no employer). Selection criteria for scholarships are detailed in the online application form - note you must be endorsed by your employer to apply if at an API member organisation. Multiple applicants from one employer may be offered a shared scholarship. You'll be offered the Early Bird price to participate if not successful with your scholarship application.



APPLY ONLINE
for a PWLP
professional
scholarship

Option 2: Register directly through your employer (no scholarship)

This is the same process as for a normal Summer School registration and must be aligned with your organisation's process for nominating staff for the Summer School.

Submit the PDF Order Form by email to **Emily Marschke** to secure your seat & pay by invoice: Emily.Marschke@api.edu.au

* You can register your order without names of participants to secure the Early Bird rate.

Registration* includes the full standard Summer School program (including all accommodation and meals) and additional online POWERful Women activities over 12 months. *Registration excludes travel costs. Costs include GST. Note discounts apply for staff from API member organisations in recognition of their contributions to the operations of the API and Summer School.

	Early Bird (before 30 September)	Standard Price	Price with Part Scholarship
Governor	\$11,220 (save 35%)	\$12,550 (save 33%)	\$3,750
Principal	\$11,490 (save 28%)	\$12,950 (save 28%)	\$4,150
Industry	\$12,850 (save 23%)	\$13,590 (save 18%)	4,790
Non-Member	\$14,470 (save 13%)	\$16,490	\$7,690

The Powerful Women 2024 program includes: all online events for the Executive Insights series, all events for the API Summer School including 2-week residential in Tasmania, and additional activities over 12 months as part of the Powerful Women program (with grads and undergrads)

2024 PROGRAM

Tentative Date	Main Activities	Hrs
WED, 20 SEP 2023	Launch: Zoom events details and online learning platform access links sent to all registered participants.	
WED, 4 OCT 2023	Executive Insights 1+2 online live sessions	1.5
WED, 18 OCT 2023	Executive Insights 3+4 online live sessions	1.5
THURS, 19 OCT 2023	PWLP Monthly Mingle - Australian Energy Market Commissioner and Chief Engineer	1
WED, 1 NOV 2023	Executive Insights 5+6 online live sessions	1.5
TUES, 21 NOV 2023	2024 PWL program launch, and Evaluate, Celebrate, and close for 2023 PWLP Program	
WED, 22 NOV 2023	Executive Insights 7+8 online live sessions	1.5
WED, 6 DEC 2023	Executive Insights 9+10 online live sessions	1.5
MON, 11 DEC 2023	Submission by Professional POWERful Women Professional Stream participants of their preferences for Syndicate Project topics as part of Summer School .	
WED, 20 DEC 2023	Professional Stream: Allocations to syndicate project groups for Summer School	
WED, 31 JAN 2024	PWLP Monthly Mingle - Career Development Plan Step 1: Define your now + AEMO Basics online learning	1
12 - 16 FEB 2024	Professional Stream: Syndicate project group introduction sessions.	1.0
19 FEB - 1 MAR 2024	Professional stream: 2-week residential Summer School in Lutrawita/Tasmania	100
THURS, 29 FEB 2024	Presentations and Q&A of 10x live presentations of the Strategic Project presentations from the API Summer School.	5
WED, 6 MAR 2024	Public release of the ~10 written Board Reports from the Summer School participants.	3-10
WED, 13 MAR 2024	Q&A on Executive Insights Briefs (and recorded presentations) with the Summer School project teams.	1.5
TUES, 26 MAR 2024	PWLP Monthly Mingle - CDP Step 4: GAP Analysis (Analyse your ORANGES)	1
APR	PWLP Monthly Mingle - CDP Step 5: Your Career Development Goals and Plan	1
MAY	PWLP Monthly Mingle - PWLP Mentoring program and professional skills online learning modules	1
JUNE	International Women in Engineering Day forum	1.5
JULY	PWLP Monthly Mingle	1
AUG	PWLP Monthly Mingle	1
SEP	PWLP Monthly Mingle	1
OCT	PWLP Monthly Mingle	1
NOV	PWLP Monthly Mingle - CDP Step 6: Evaluate, Celebrate, and Update + 2024 PWLP Program END	1.5

SUMMER SCHOOL PRESENTATIONS

Strategic Project Presentations 29 FEB 2024

Recommendations for action and professional development in response to the 10x strategic challenges shared by Australian power sector Executives

Join us online to hear from the next generation of the power sector's leaders (participants in the API's annual Summer School) as they share their recommendations for action in response to the 10 key challenges and opportunities for the Australian power sector.

Replying to the Strategic Challenge Questions posed by the 10x Executives who contributed to our Executive Insights series, our ~45 Summer School participants will present - in groups of 4-5 people, in 15 mins + 5 mins Q&A - on the following:

- Summary of the Challenge posed by their selected Executive Insights speaker
- What are the major factors contributing to the Challenge?
- What are the major issues and stakeholders impacted by the Challenge?
- What is the current state of play?
- What are their recommendations for action (and for which stakeholders)?
- What workforce and skills gap issues do they see
- What are their suggestions for professional development by people early in their careers so they can contribute to the challenges moving forward.

REGISTER NOW



Register now to secure your spot for the FREE webinar on 29 February 2024, and links to the recorded presentations and the companion written reports from the Summer School participants in March 2024.



THANK YOU TO OUR MEMBERS WHO MAKE THIS ALL POSSIBLE:

Governor members:



Part of Energy Queensland



Principal members:



Industry members:




**DEVELOPING THE POWER SECTOR
WORKFORCE FOR OUR FUTURE**

Get in touch

Emily Marschke,

Professional Programs and Operations Manager

 0424-901-393

 emily.marschke@api.edu.au

 www.api.edu.au