

API Summer School

What does it mean to be a female leader in the power sector today?

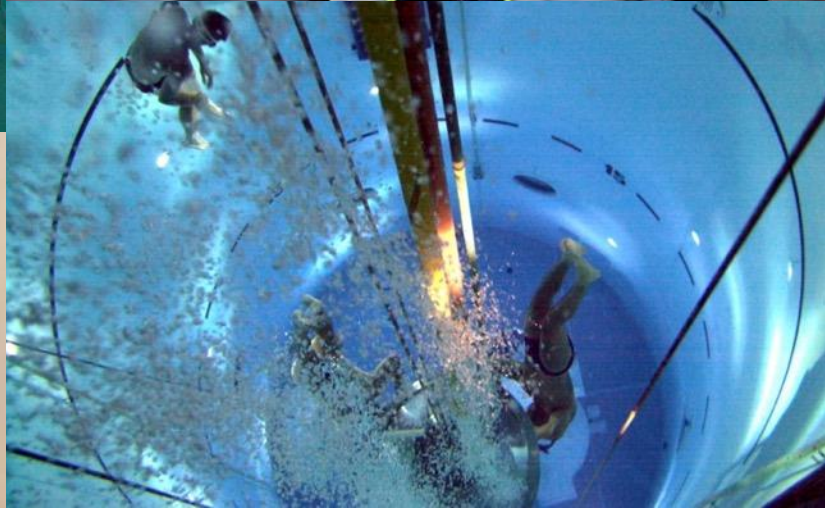
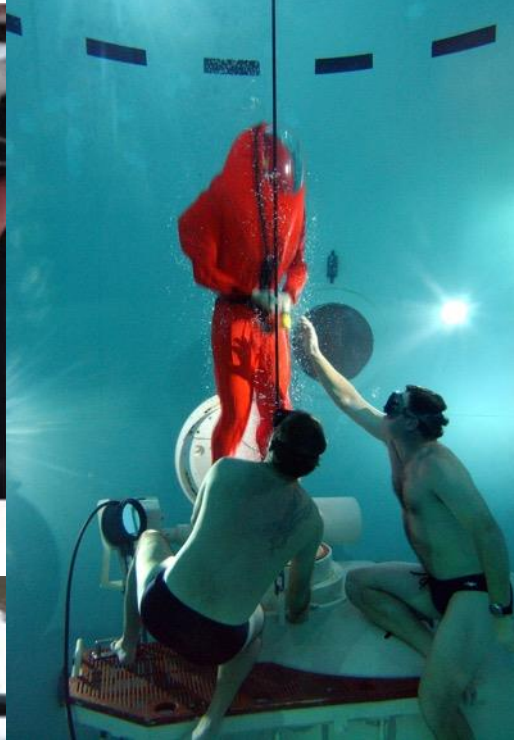
Kirsty Sullivan, Manager Business Resilience

6 May 2022

Background: The Past



ABAWA Kirsty Coll (facing camera) on a console in the operations room onboard HMAS Waller. PIC: ABPH Damian Pawlenko



An Opportunity: The present

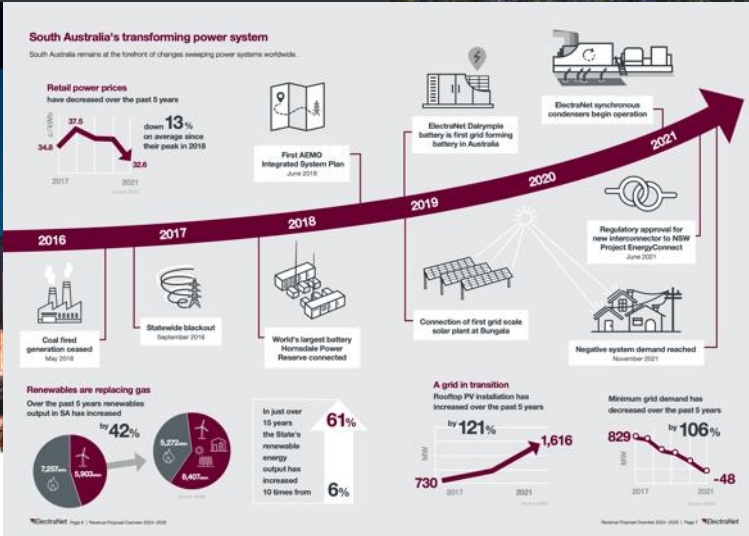
Business Resilience

- Business Continuity, Incident / Emergency/ Crisis Management
- Risk, Governance, Assurance & Policy
- Enterprise Information Management
- Cyber Security
- Facilities, Fleet & Security



Revenue Proposal Overview 2024-2028

31 January 2022



Leadership Insights: What is important?

- Our people
- Support
- 5 Why's
- Diversity
- Be brave – be you!
- Opportunities
- Learning and self improvement
- Flexibility
- Today & future leadership



Thank You

For more information about ElectraNet and
our Graduate Program (Aug/Sept intake)
visit www.electranet.com.au

